

## ACCESO AO 1º CURSO DE GRAO PROFESIONAL CURSO 2024/2025

### PROBA DE TEORÍA

Nome e apelidos: \_\_\_\_\_

1. Indica as tonalidades (maior e menor) correspondentes ás seguintes armaduras: (1 pto.)

- |       |       |       |
|-------|-------|-------|
| a) 5# | b) 3b | c) 4b |
| d) 6# | e) 2b | f) 6b |

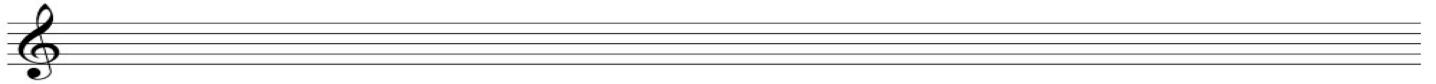
2. Indica as armaduras das seguintes tonalidades (M=maior; m=menor): (1pto)

- |          |         |          |
|----------|---------|----------|
| a) Re m  | b) Mi m | c) Fa M  |
| d) Sol m | e) Si m | f) Mib m |


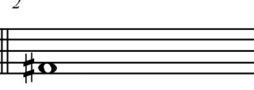
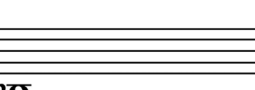
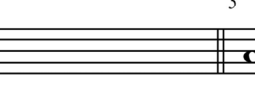
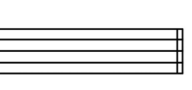
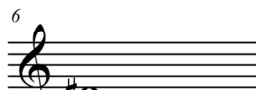
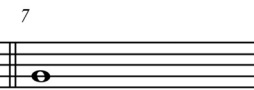
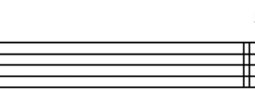
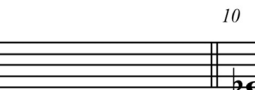
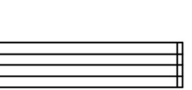
3. Indentifica os seguintes intervalos (número e especie; ex, 8ª A): (1 pto.)



4. Inverte os intervalos do exercicio anterior e indica número e especie: (1 pto.)

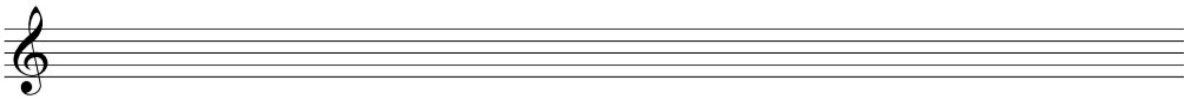


5. Constrúe os intervalos que se indican: (1.5 ptos.)

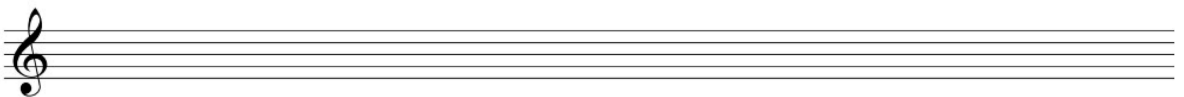
1	2	3	4	5
				
quinta xusta asc.	sexta menor asc.	cuarta aumentada asc.	terceira menor desc.	séptima menor desc.
6	7	8	9	10
				
oitava xusta asc.	terceira menor asc.	treceira maior asc.	cuarta xusta desc.	quinta aumentada asc.

6. Escribe as seguintes escalas: (1.5 ptos.)

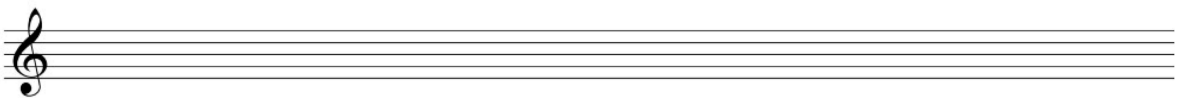
Re menor armónica



Do menor melódica



Mib Maior mixolidia (4º tipo)



7. Forma os acordes que se indican a continuación: (1.5 pto.)

A musical staff in treble clef with five notes: C4, E4, G4, A4, and C5. Below the staff, the following chord names are written: Pm, 5ºDis., 7ºD., PM, and 5ªAum.

8. Indica, nos espazos marcados, os graos e a cadencia correspondente (auténtica, plagal, semicadencia ou rota). Indica tamén a tonalidade do fragmento: (1.5 pto.)

Tonalidade: \_\_\_\_\_

A musical score for a 6/8 piece in D major. The top staff is the melody, and the bottom two staves are the piano accompaniment. The melody consists of a sequence of notes: D4, E4, F#4, G4, A4, B4, C5, B4, A4, G4, F#4, E4, D4. The piano accompaniment features a rhythmic pattern of eighth notes and chords.

Graos \_\_\_\_\_  
Cadencia \_\_\_\_\_