

ACCESO AO 1º CURSO DE GRAO PROFESIONAL CURSO 2024/2025

PROBA DE TEORÍA

Nome e apelidos: _____

1. Indica as tonalidades (maior e menor) correspondentes ás seguintes armaduras: (1 pto.)

- | | | |
|-------|-------|-------|
| a) 5# | b) 3b | c) 4b |
| d) 6# | e) 2b | f) 6b |

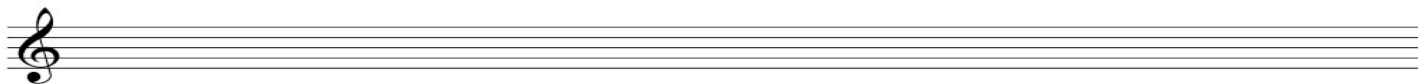
2. Indica as armaduras das seguintes tonalidades (M=maior; m=menor): (1pto)

- | | | |
|----------|---------|----------|
| a) Re m | b) Mi m | c) Fa M |
| d) Sol m | e) Si m | f) Mib m |

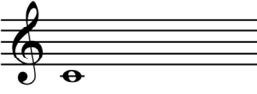
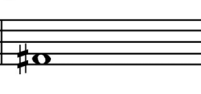
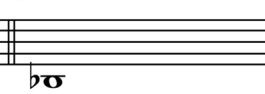
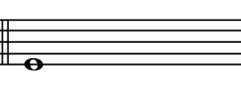
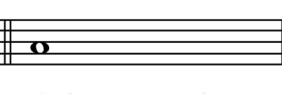
3. Indentifica os seguintes intervalos (número e especie; ex, 8ª A): (1 pto.)


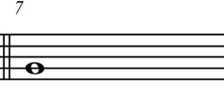
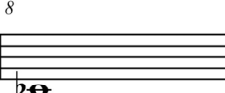
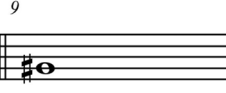
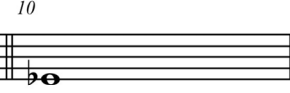


4. Inverte os intervalos do exercicio anterior e indica número e especie: (1 pto.)



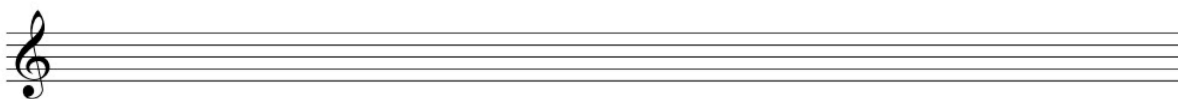
5. Constrúe os intervalos que se indican: (1.5 ptos.)

1	2	3	4	5
				
quinta xusta asc.	sexta menor asc.	cuarta aumentada asc.	terceira menor desc.	séptima menor desc.

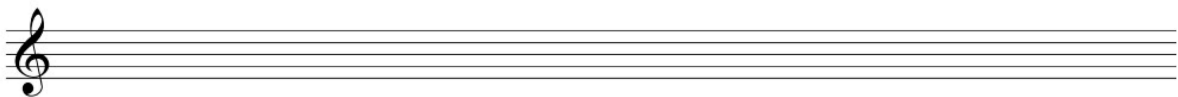
6	7	8	9	10
				
oitava xusta asc.	terceira menor asc.	treceira maior asc.	cuarta xusta desc.	quinta aumentada asc.

6. Escribe as seguintes escalas: (1.5 ptos.)

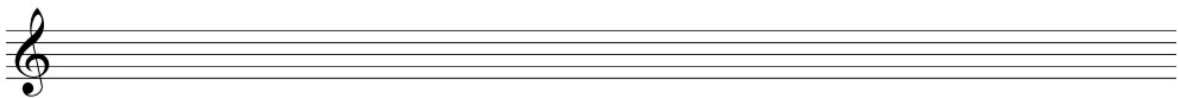
Re menor armónica



Do menor melódica



Mib Maior mixolidia (4º tipo)



7. Forma os acordes que se indican a continuación: (1.5 pto.)

A musical staff in treble clef with five notes: C4, E4, G4, A4, and C5. Below the staff, the following chord names are written: Pm, 5ºDis., 7ºD., PM, and 5ªAum.

8. Indica, nos espazos marcados, os graos e a cadencia correspondente (auténtica, plagal, semicadencia ou rota). Indica tamén a tonalidade do fragmento: (1.5 pto.)

Tonalidade: _____

A musical score for a 6/8 piece in G major. The melody is in the treble clef, and the piano accompaniment is in the bass clef. The score consists of four measures. The melody starts with a half note G4, followed by a quarter note A4, a quarter note B4, and a half note C5. The piano accompaniment consists of a steady eighth-note pattern in the right hand and a simple bass line in the left hand.

Graos _____
Cadencia _____

ACCESO AO 1º CURSO DE GRAO PROFESIONAL CURSO 2024/2025

PROBA DE RITMO E CLAVE DE FA EN 4ª

♩ = 60

♩ = ♩

♩ = ♩.

2

3

2

3

ENTOACIÓN (empregando como referencia o la = 440hz)

amdor

CEMU Profesional
O ROSAL

Centro Autorizado Profesional Agrupación Musical do Rosal

Código Centro: 36025232

Rúa Couso, s/n Auditorio do Rosal

36770 O Rosal (Pontevedra)

Telfs.: 986.626.311 / 609.866.792

cemu.profesional.rosal@edu.xunta.gal

info@agrupacionmusicaldorosal.com

DITADO

