

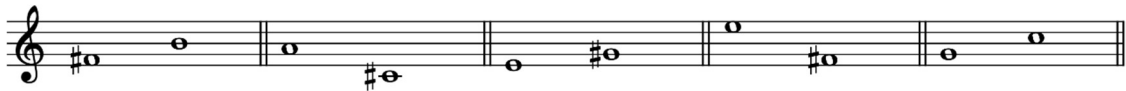
Proba de acceso a Grao Profesional

23 de xuño de 2025

Proba de Teoría

Nome: _____

1. Clasifica o número e especie dos seguintes intervalos: (1 pto.)



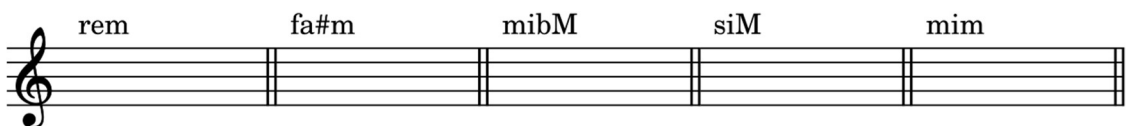
2. Forma os intervalos sinalados dende a nota dada: (1.5 ptos.)



3. Indica as tonalidades Maior e menor das seguintes armaduras: (1.5 ptos)



4. Escribe tono relativo e armadura das seguintes tonalidades: (1 pto)



5. Escribe as alteracións necesarias para conseguir cada unha das escalas. (1.5 Ptos)



6. Forma os acordos que se indican a partir da fundamental dada. (1.5 Ptos)

menor Maior dism Maior 7 dominante

7. Indica que cadencias son as sinaladas: (1.5 Ptos)

Graos.....	Graos.....	Graos.....
Cadencia.....	Cadencia.....	Cadencia.....
Tipo.....	Tipo.....	Tipo.....

Proba de Dictado

Acceso a GP xuño 2025

CEMU O Rosal

Proba de Lectura

♩. = 60

Musical score for 'Proba de Lectura' in G major, 6/8 time. The score consists of five staves. The first staff begins with a treble clef and a key signature of one sharp (F#). The tempo is marked as ♩. = 60. The score includes various musical notations such as slurs, ties, and articulation marks. Measure numbers 5, 10, 15, and 22 are indicated at the start of their respective staves. The piece concludes with a double bar line.

Proba de Entonación

Musical score for 'Proba de Entonación' in G major, 4/4 time. The score consists of two staves. The first staff begins with a treble clef and a key signature of one sharp (F#). The piece concludes with a double bar line. A triplet of eighth notes is marked with a '3' above it in the second measure of the second staff.